

MISSION CRITICAL

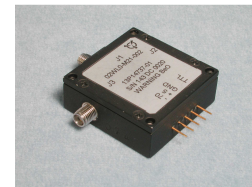
H22-103 T/R SWITCH

Description

This document describes the Specification for a high power 1P2T-T/R switch. This is a cold switched design i.e.; switched while RF is off. Proper bias levels must be applied when operating this device.

Features

- ~ INTERNAL DRIVER
- ~ NOISE IMMUNE LOGIC (RS422)
- ~ FAST SWITCHING SPEED
- ~ 1000 W PEAK RF INPUT POWER
- ~ 80W AVERAGE POWER
- ~ SMALL PACKAGE SIZE

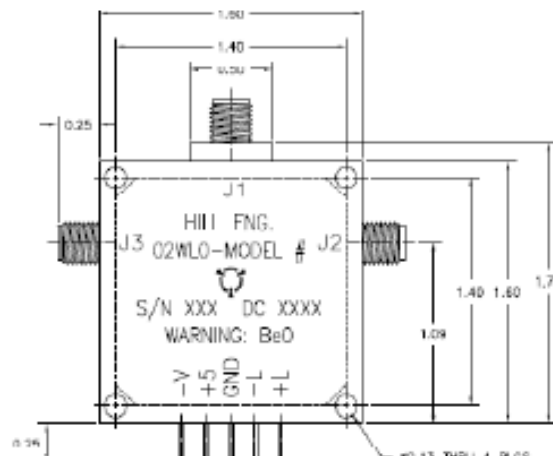


Maximum Ratings

Parameter	Symbol	Value	Unit
RF peak power	W	1000	W
Pulse width		10	μSec
Insertion loss		0.7	dB
Positive DC Voltage		+5	V
Bias DC Voltage		-50	V

Electrical Characteristics

Parameter	Min	Typ	Max	Unit
Frequency Range	500		2000	MHz
Insertion loss	0.4	0.5	0.7	dB
Isolation RCV	50	53	60	dB
VSWR (selected)	1.3:1	1.4:1	1.5:1	
VSWR (load)			2:1	
VSWR (source)			1.2:1	
Switching speed			1.5	μS
Switching rate		50	100	KHz
TTL logic		RS-422		
Pos voltage	4.8	5.0	5.2	+V
Pos current			300	mA
Neg voltage	-46	-50	-54	-V
Neg current			60	mA
Connectors		SMA F		



**Comtech PST/
Hill Engineering Division**
417 Boston St
Topsfield, MA 01983
Phone: 978-887-5754
Fax: 978-887-7244
E-mail: sales@hilleng.com
Web Site:
www.comtechpst.com/hill/