
	Cage Code:	Title:	Date:	Rev:	Model no:
	02WL0	<b>PRODUCT DATA (subject to change)</b>	11/11/2009	None	<b>AB-057</b>
(15H03798-01)					

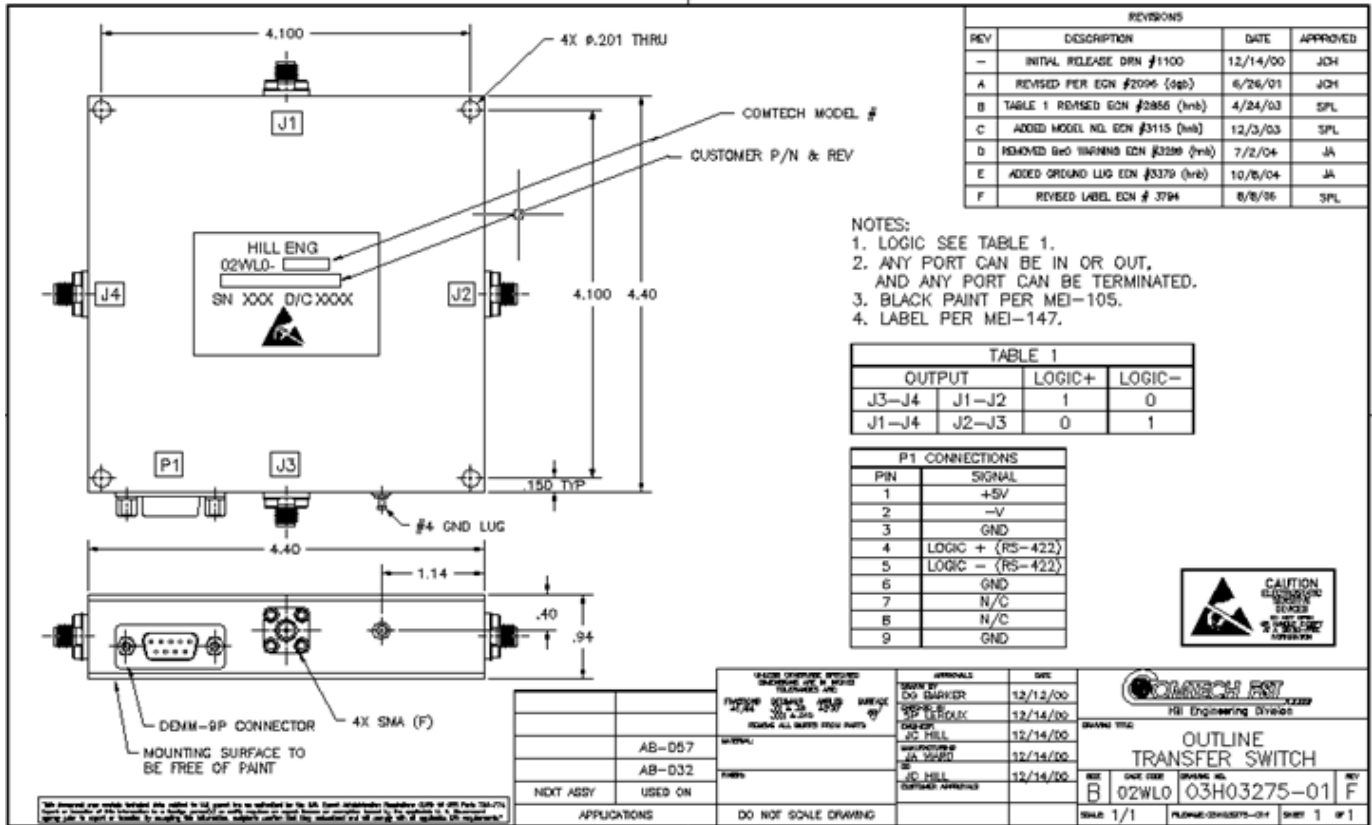
**This document describes the performance a high power 2P2T switch. This is a cold switched design i.e.; switched while RF is off. Proper bias levels must be applied when operating this device.**

ITEM NO	CHARACTERISTIC	CONDITIONS	MIN	MAX	UNITS	COMMENTS
1	POWER SPECIFICATION	IN BAND, SELECTED PORT				
1.1	FREQUENCY		1.25	1.35	GHz	
1.2	PEAK POWER			2000	WATTS	
1.3	PULSE WIDTH			100	μs	
1.4	DUTY			5	%	
1.5	AVERAGE POWER			100	WATTS	
2	POWER SPECIFICATIONS	GUARD BAND, SELECTED PORT				
2.1	FREQUENCY		1.35	1.8	GHz	
2.2	PEAK POWER			100	WATTS	
2.3	PULSE WIDTH			100	μs	
2.4	DUTY			5	%	
2.5	CW POWER			5	WATTS	
3	POWER SPECIFICATIONS	OUT OF BAND				
3.1	FREQUENCY		>1.8		GHz	
3.2	PEAK POWER			1.0	WATTS	
3.3	PULSE WIDTH		CW		μs	
3.4	DUTY		CW		%	
3.5	CW POWER			1.0	WATTS	
4	OPERATING FREQUENCY		1.25	1.35	GHz	
5	INSERTION LOSS					
5.1				0.9	dB	
6	ISOLATION					
6.1	INPUT TO OUTPUT		35		dB	
6.2	OUTPUT TO OUTPUT		35		dB	
7	PHASE					
7.1	MATCHING					NOT SPECIFIED
7.2	TRACKING					NOT SPECIFIED
8	VSWR					
8.1	SELECTED PORTS			1.4:1		

	Cage Code:	Title:	Date:	Rev:	Model no:
	02WLO	<b>PRODUCT DATA (subject to change)</b>	11/11/2009	None	<b>AB-057</b>

(15H03798-01)

ITEM NO	CHARACTERISTIC	CONDITIONS	MIN	MAX	UNITS	COMMENTS
8	VSWR (CONT.)					
8.2	PORTS NOT SELECTED					INFINITE
8.3	LOAD			1.8:1		
8.4	SOURCE			1.5:1		
9	HARMONICS & SPURS					
9.1	INTERNALLY GENERATED					NOT SPECIFIED
10	SWITCHING					
10.1	SPEED	50% LOGIC TO 0.5dB I.L.		1	µs	
10.2	SWITCHING RATE			50	kHz	
10.3	COMMAND LOGIC	RS-422				SEE NOTE 1
10.4	VIDEO LEAKAGE					NOT SPECIFIED
10.4	LOGIC TABLE					SEE DWG 3275 (below)
11	D.C. POWER					
11.1	POSITIVE BIAS VOLTAGE		4.8	5.2	VDC	SEE NOTE 2
11.2	NEGATIVE BIAS VOLTAGE		-66	-74	VDC	SEE NOTE 3
11.4	POSITIVE BIAS CURRENT			500	mA	
11.5	NEGATIVE BIAS CURRENT			10	mA	SEE NOTE 4
<p>NOTE 1: USE DS26LS31 OR EQUIVALENT LINE DRIVER.            NOTE 2: NO REVERSE POLARITY PROTECTION IS PROVIDED ON THE POSITIVE RAIL. OVERVOLTAGE PROTECTION IS INCLUDED ON THE POSITIVE RAIL            NOTE 3: REVERSE POLARITY AND OVERVOLTAGE PROTECTION IS PROVIDED ON THE NEGATIVE RAIL.            NOTE 4: 10mA IS STEADY STATE RATING. 40mA REQUIRED FOR 50kHz OPERATION</p>						
12	CONNECTORS					
12.1	RF					SMAF
12.3	DC					DEMM-9P
13	MECHANICAL					
13.1	WEIGHT			24	Oz.	
13.2	OUTLINE					SEE DWG (below)
14	ENVIRONMENTAL					
14.1	OPERATING TEMPERATURE		-50	+70	°C	
14.2	STORAGE TEMPERATURE		-55	+85	°C	
14.3	VIBRATION LEVEL					SHELTERED GROUND MOBILE



REVISIONS			
REV	DESCRIPTION	DATE	APPROVED
-	INITIAL RELEASE DRN #1100	12/14/00	JCH
A	REVISED PER EGN #2096 (sgp)	6/26/01	JCH
B	TABLE 1 REVISED EGN #2886 (hnb)	4/24/03	SPL
C	ADDED MODEL NO. EGN #3115 (hnb)	12/3/03	SPL
D	REMOVED GND THRUINS EGN #3229 (hnb)	7/2/04	JA
E	ADDED GROUND LUG EGN #3379 (hnb)	10/6/04	JA
F	REVISED LABEL EGN # 3794	8/6/06	SPL

- NOTES:  
 1. LOGIC SEE TABLE 1.  
 2. ANY PORT CAN BE IN OR OUT, AND ANY PORT CAN BE TERMINATED.  
 3. BLACK PAINT PER MEI-105.  
 4. LABEL PER MEI-147.

OUTPUT	LOGIC+	LOGIC-
J3-J4	1	0
J1-J4	0	1

PIN	SIGNAL
1	+5V
2	-V
3	GND
4	LOGIC + (RS-422)
5	LOGIC - (RS-422)
6	GND
7	N/C
8	N/C
9	GND



<p>ISSUE CHANGES SPECIFIED BY REVISED DRAWING OR PART NUMBER AND DATE</p> <p>DATE: 12/14/00</p> <p>BY: DO SQUIER</p> <p>DATE: 12/14/00</p> <p>BY: SP TERDAX</p> <p>DATE: 12/14/00</p> <p>BY: JC HILL</p> <p>DATE: 12/14/00</p> <p>BY: JC HILL</p> <p>DATE: 12/14/00</p> <p>BY: JC HILL</p> <p>DATE: 12/14/00</p>	<p>APPROVALS</p> <p>DATE: 12/12/00</p> <p>BY: DO SQUIER</p> <p>DATE: 12/14/00</p> <p>BY: SP TERDAX</p> <p>DATE: 12/14/00</p> <p>BY: JC HILL</p> <p>DATE: 12/14/00</p> <p>BY: JC HILL</p> <p>DATE: 12/14/00</p>	<p>DATE: 12/14/00</p> <p>BY: DO SQUIER</p> <p>DATE: 12/14/00</p> <p>BY: SP TERDAX</p> <p>DATE: 12/14/00</p> <p>BY: JC HILL</p> <p>DATE: 12/14/00</p> <p>BY: JC HILL</p> <p>DATE: 12/14/00</p>
<p>AB-057</p> <p>AB-D32</p> <p>USED ON</p>	<p>AB-057</p> <p>AB-D32</p> <p>USED ON</p>	<p>AB-057</p> <p>AB-D32</p> <p>USED ON</p>
<p>APPLICATIONS</p>	<p>DO NOT SCALE DRAWING</p>	<p>SCALE 1/1</p> <p>PHONE: 20455575-01</p> <p>SHEET 1 OF 1</p>